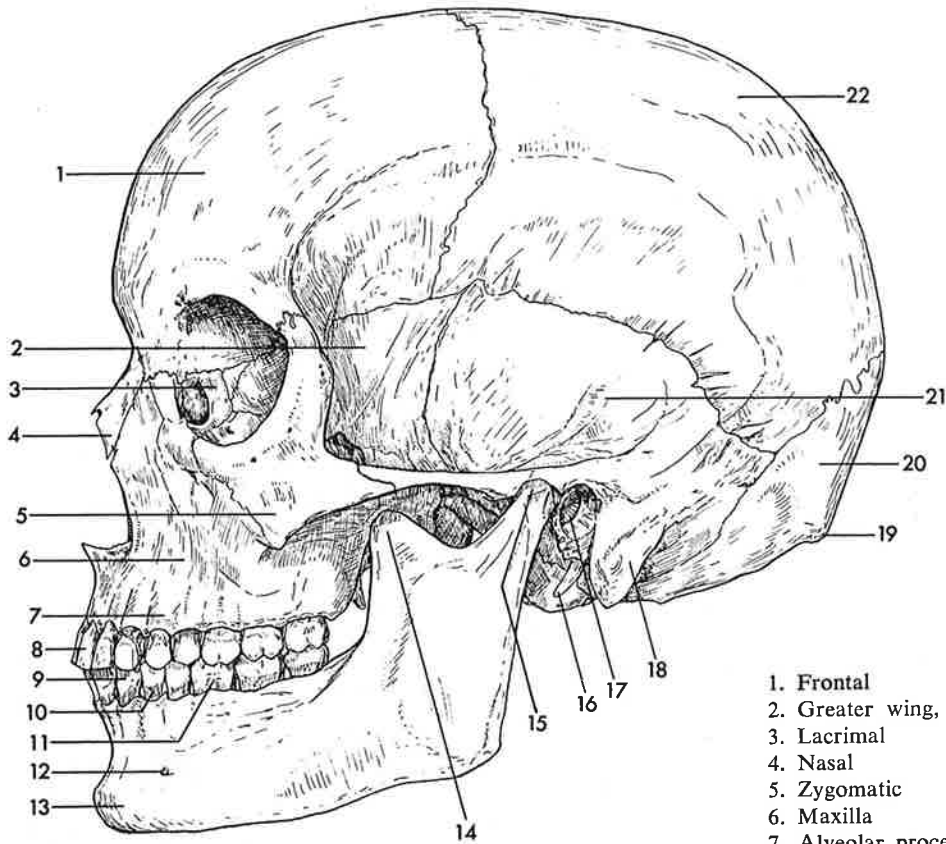
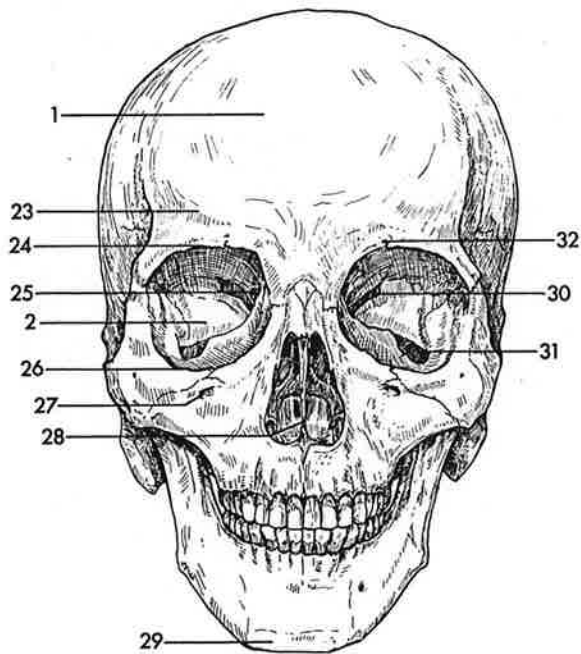


HUMAN SKELETON 3.

Skull



1. Frontal
2. Greater wing, sphenoid
3. Lacrimal
4. Nasal
5. Zygomatic
6. Maxilla
7. Alveolar process
8. Incisor
9. Canine
10. Premolar
11. Molar
12. Mental foramen
13. Mandible
14. Coronoid process
15. Condylar process
16. Styloid process
17. External auditory meatus
18. Mastoid process
19. External occipital protuberance
20. Occipital
21. Temporal
22. Parietal
23. Superciliary ridge
24. Supraorbital margin
25. Optic canal
26. Infraorbital margin
27. Infraorbital foramen
28. Nasal septum
29. Mental protuberance
30. Superior orbital fissure
31. Inferior orbital fissure
32. Supraorbital foramen



Carolina Biological Supply Company, Burlington, North Carolina 27215

Printed in U.S.A. © 1968 Carolina Biological Supply Company

Bioreview Sheet
6740

