

PREGNANCY AND DELIVERY

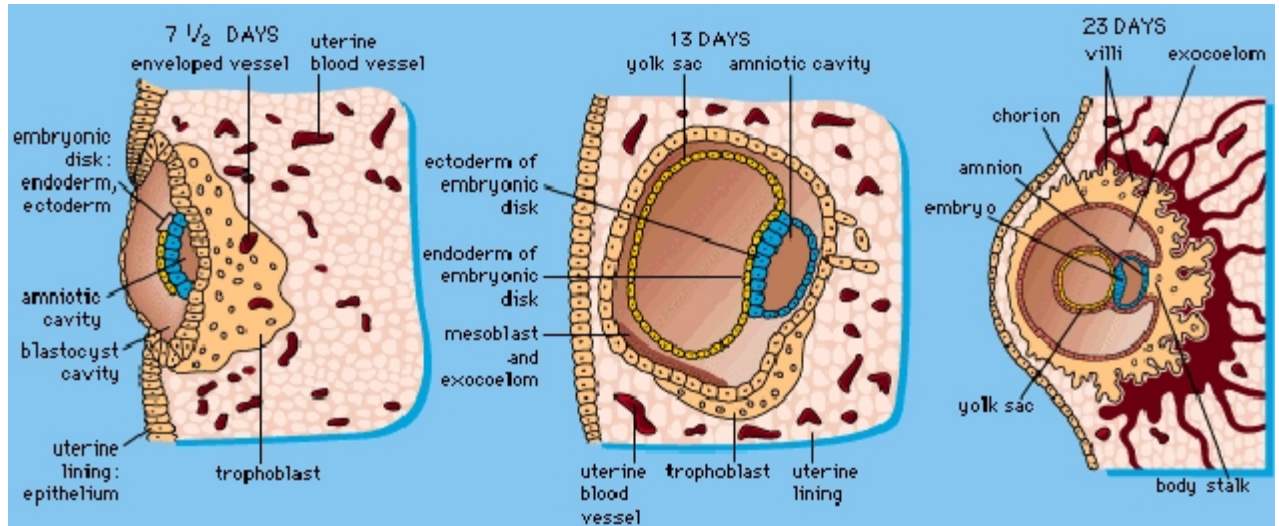
4 June 2003, 4 June 04, 2 June 2006, 2 June 20
Campbell's 6th: 992-1009,
7th: 979-984, 987-1001,
Sadava's 8th: 920-939

Fertilization (p 922)

nucleus enters,
flagellum and
mitochondria do not.
Cleavage (p 924)

Implantation (p 925)

triggers formation of
chorionic
gonadotropin, acts like
luteinizing hormone,
maintains the corpus
luteum so that estrogen
and progesterone continue to be released.



FIRST TRIMESTER:

an embryo, major dev. processes:

2nd week: ecto and endoderm form

3rd week:

gastrulation: formation of mesoderm (p 927, 928, 931)

neurulation: formation of neural tube (p 933)

organs formed

Note that **teratogens** are especially potent in first trimester,
smoking, drinking, drugs

SECOND TRIMESTER (p 935)

placenta begins to function
placenta releases estrogen and progesterone. Now a fetus.
organs continue to develop
hands and feet form by apoptosis

THIRD TRIMESTER

primarily one of growth, preparation for
birth, maturation of respiratory
system

Nagele's rule: subtract 3 months add 7 days to day of
start of last menses (10% on day, 50% wk)

Stages of Labor, initiated by oxytocin (p 981)

position of fetus, occipital versus breech
perineum, distance between ischial tuberosities

see stages on p 981:

- Dilation of cervix** effacement and dilation (about 20 hours), 10 cm dilation
- delivery of baby** descent thru birth canal, crowning, head, arm, body
- delivery of placenta** enhanced by breast stim, infant

Apgar scores, score 0-2 for each:

- 1) color, 2) respiration, 3) heart rate, 4) reflexes, 5) activity
- 7-10 at 5 minutes is normal, 0-3 is a problem.

BREAST FEEDING

colostrum and health

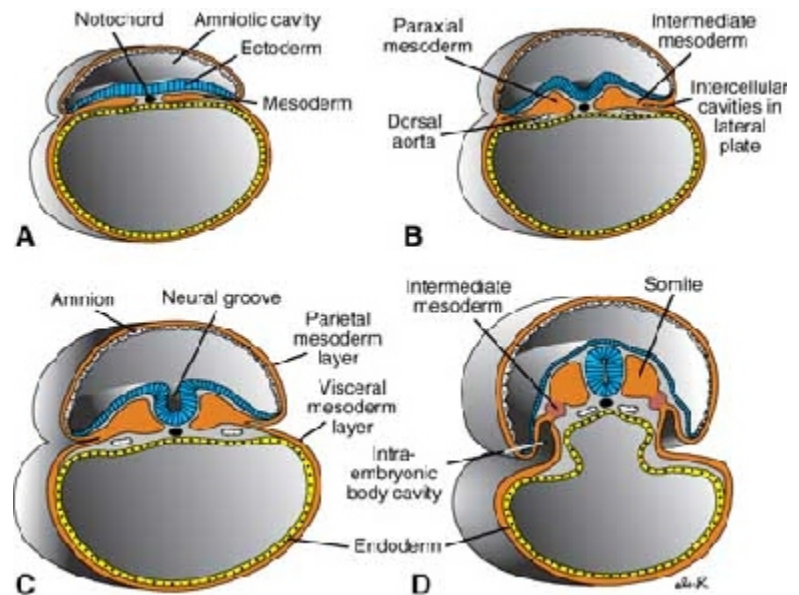
passive immunity by absorbing
antibodies from mother

brain development

requires constant stimulation

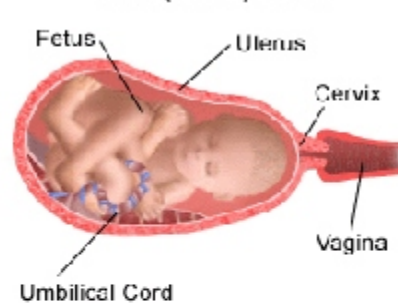
emotional bond

established, sense of security

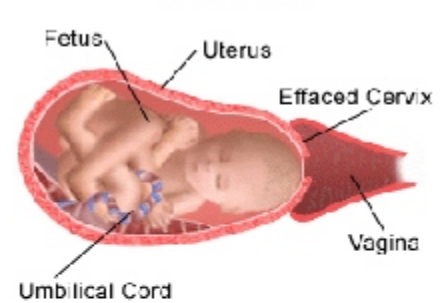


Stage 1

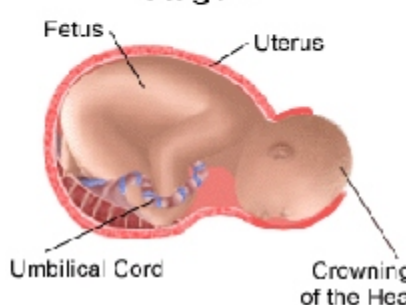
Initial (Latent) Phase



Active Phase



Stage 2



Stage 3

