

STRUCTURE OF DNA

rvsd 2/12/93, 2/10/95, 2/12/96, 5 Feb 01, 12 Feb 03, 10 Feb 06, 27Feb09, 10Feb10, 10Feb12
 SGML, p. 3-5, 244-248, GMSLG 7th: 4-7, 243-248, Sadava: 239-241

VIDEO: <http://www.youtube.com/watch?v=ZGHkHMoyC5I>

Define: nucleotide, nucleoside

purine (fr pure + uric + N₂ containing)

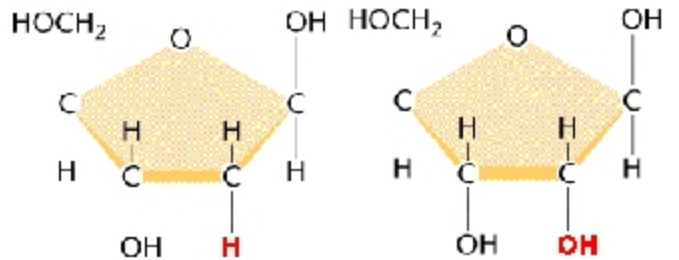
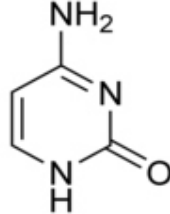
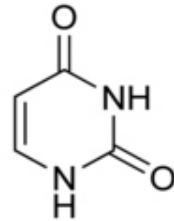
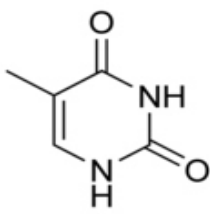
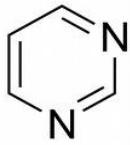
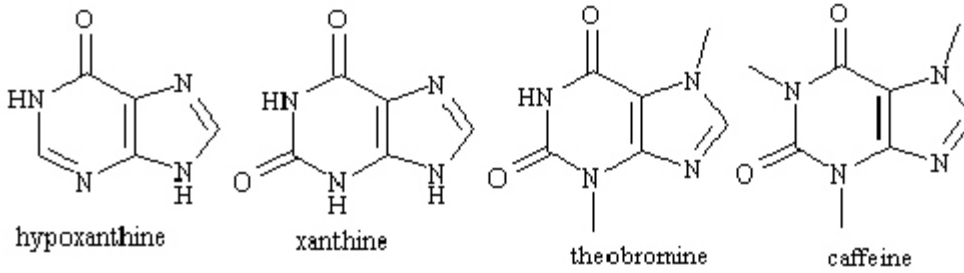
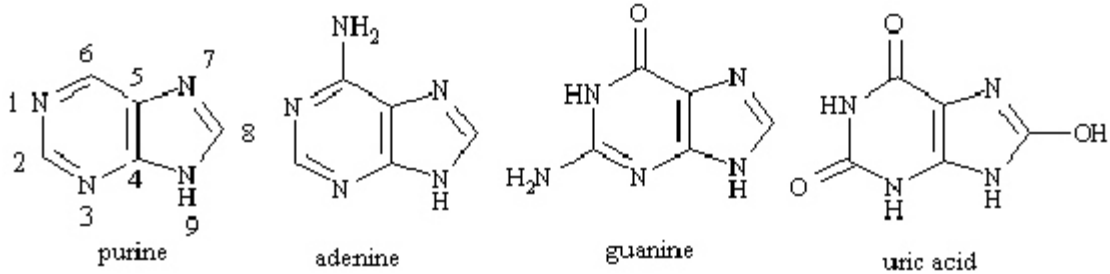
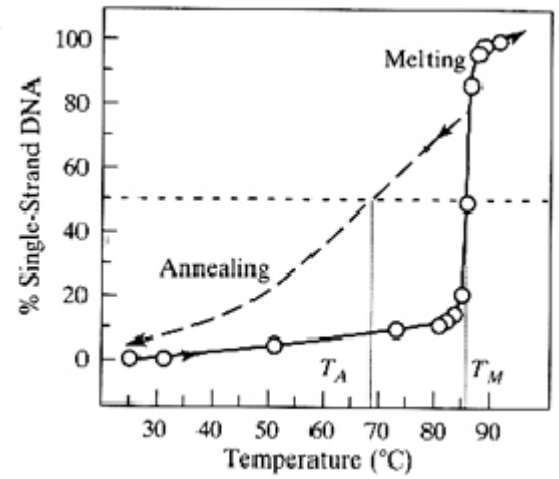
pyrimidine (fr pyridine [fire] with single N) distilled fr bone oil...

phosphodiester linkages in backbone

Chargaff (1950s) found A=T and G=C, but %GC varied (p 245)

higher GC = higher melting

(Show melting/annealing curve, p 261-262)



pyrimidine

Thymine

Uracil

Cytosine

Watson & Crick proposed lock and key, two H bond for A:T, three for G:C

